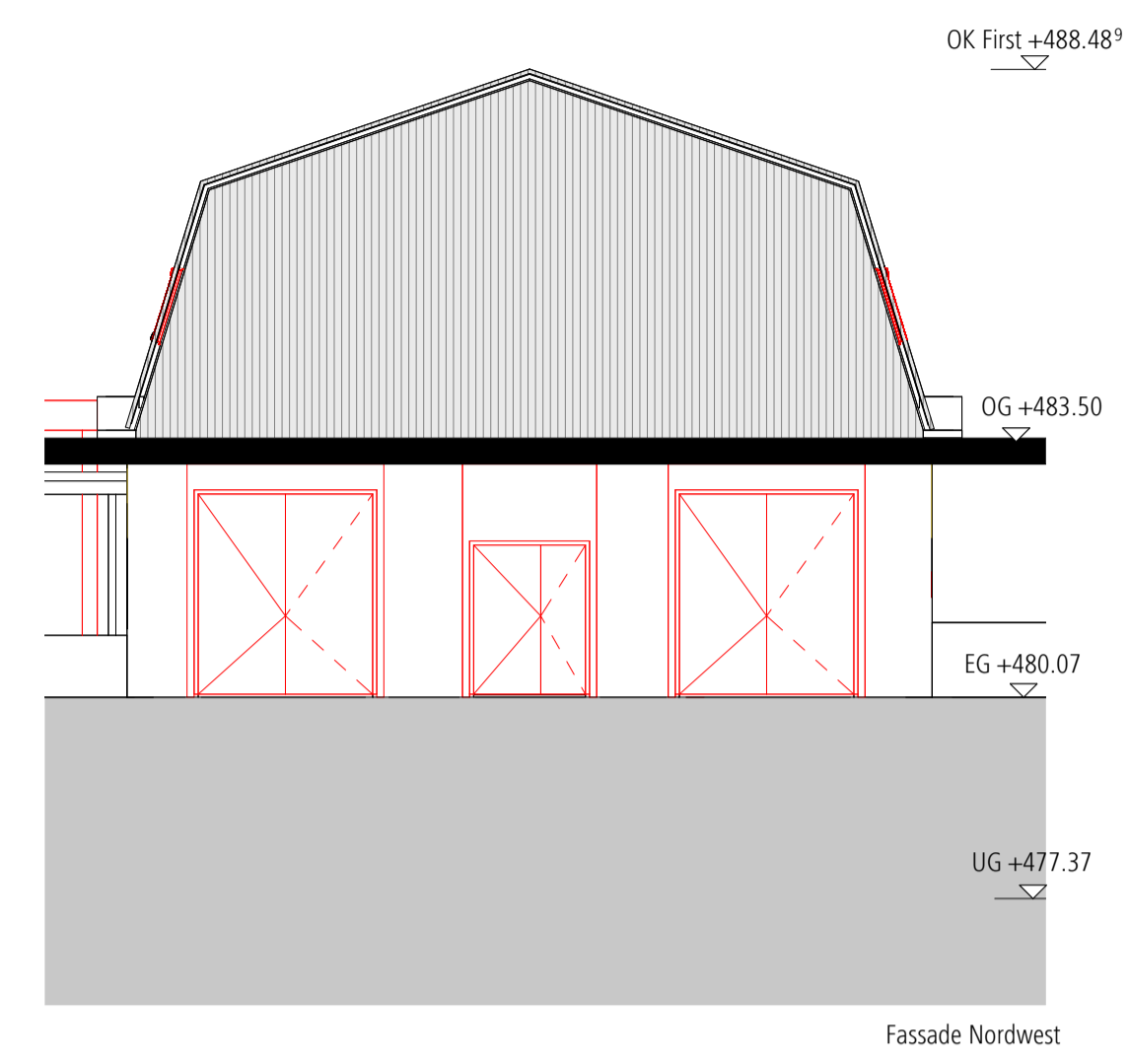
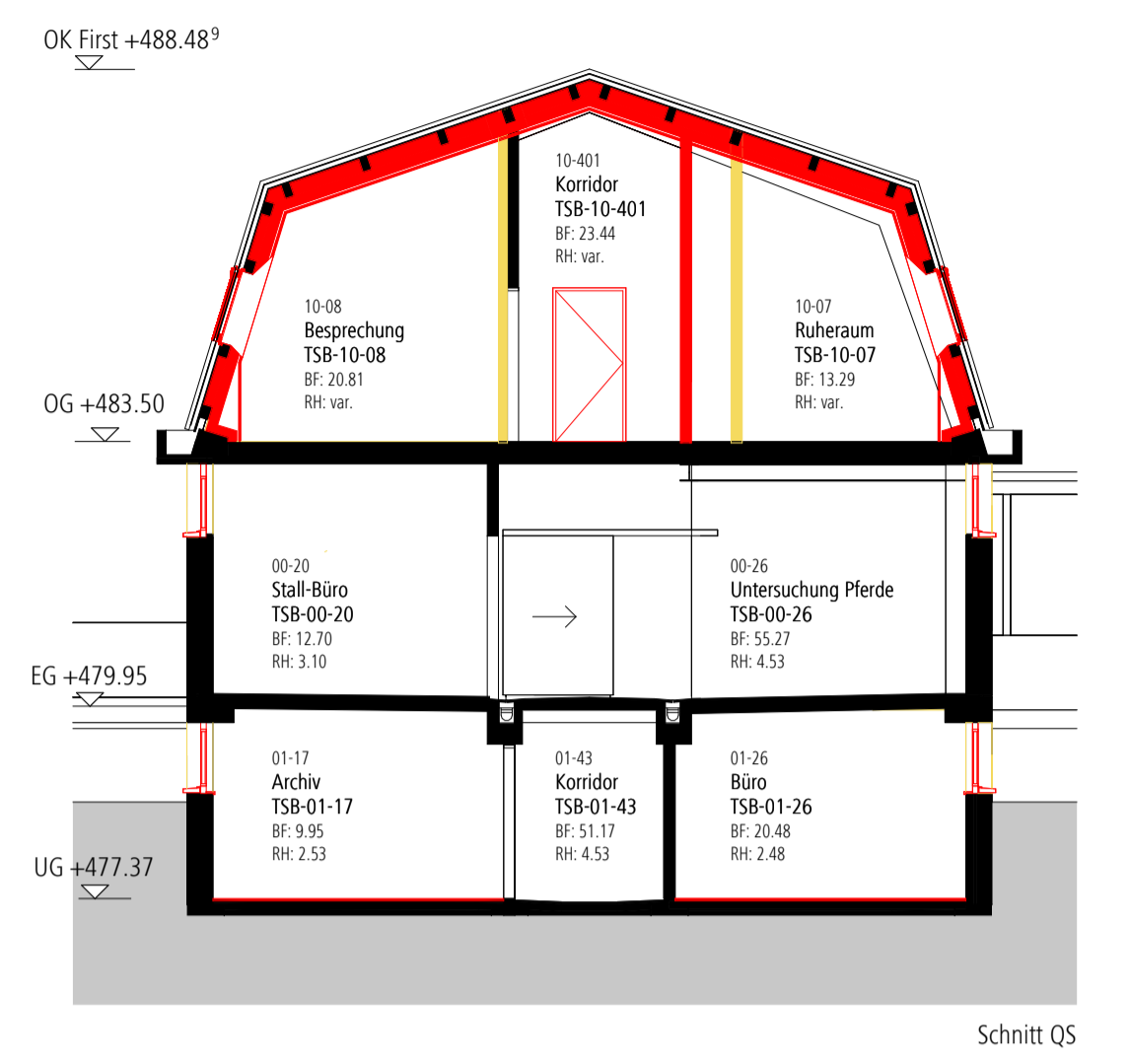


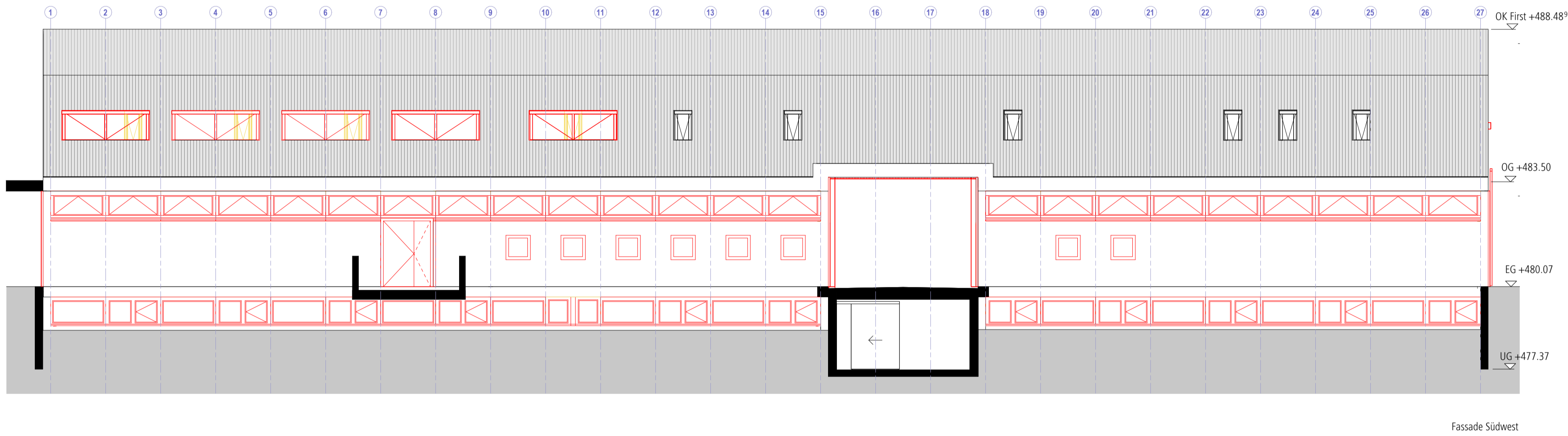
Fassade Nordost



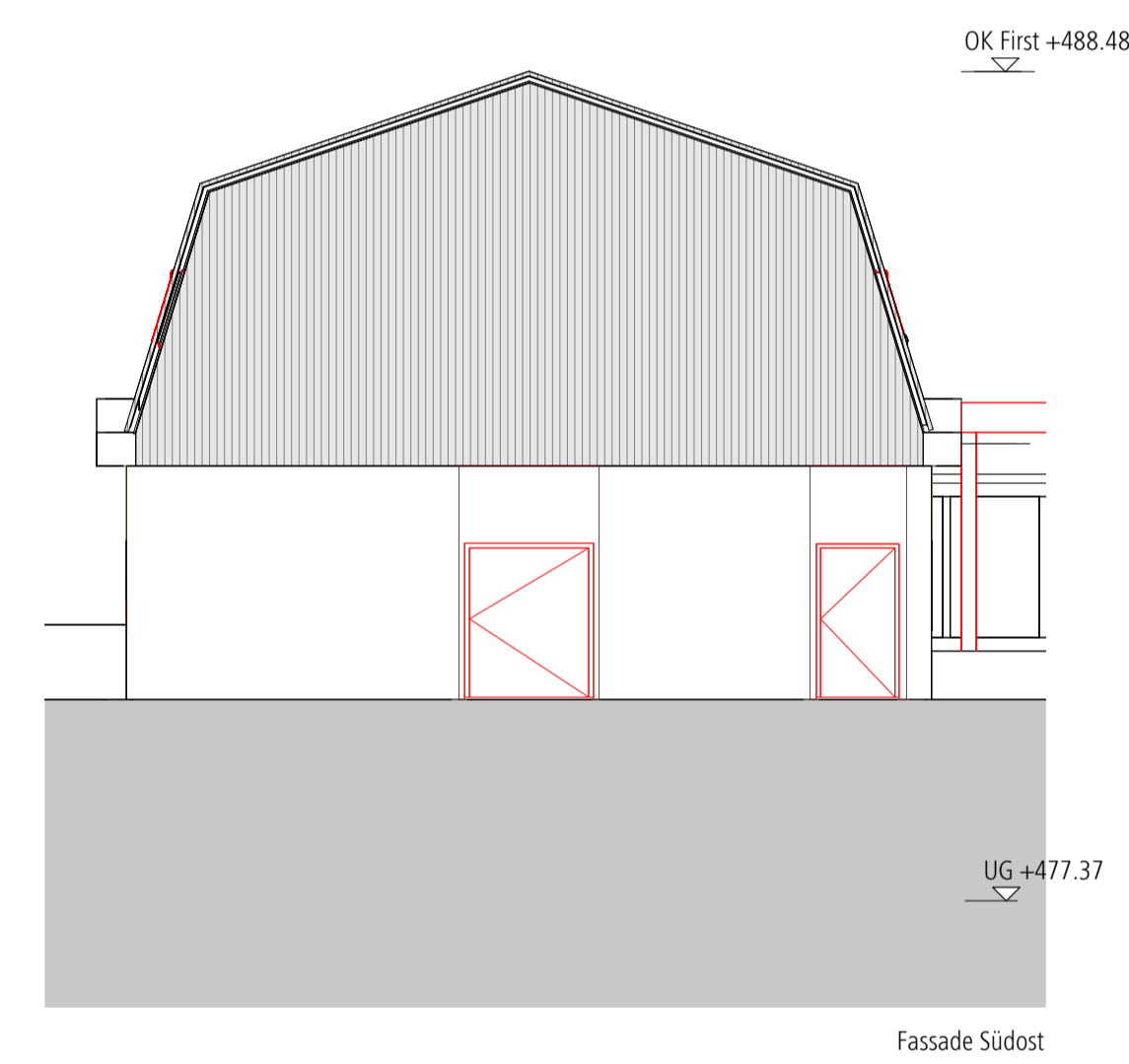
Fassade Nordwest



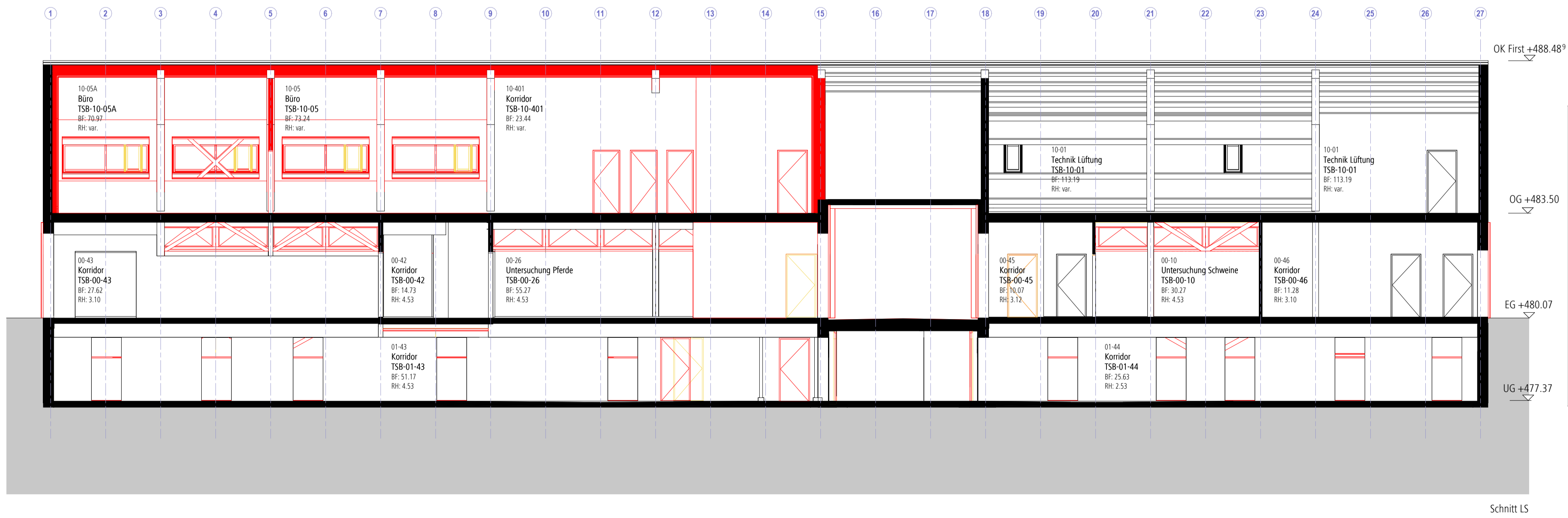
Schnitt QS



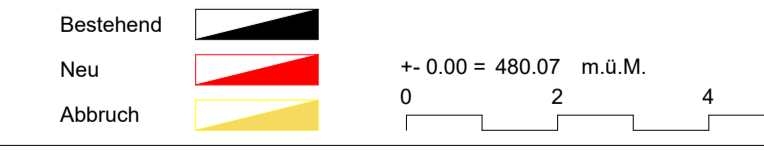
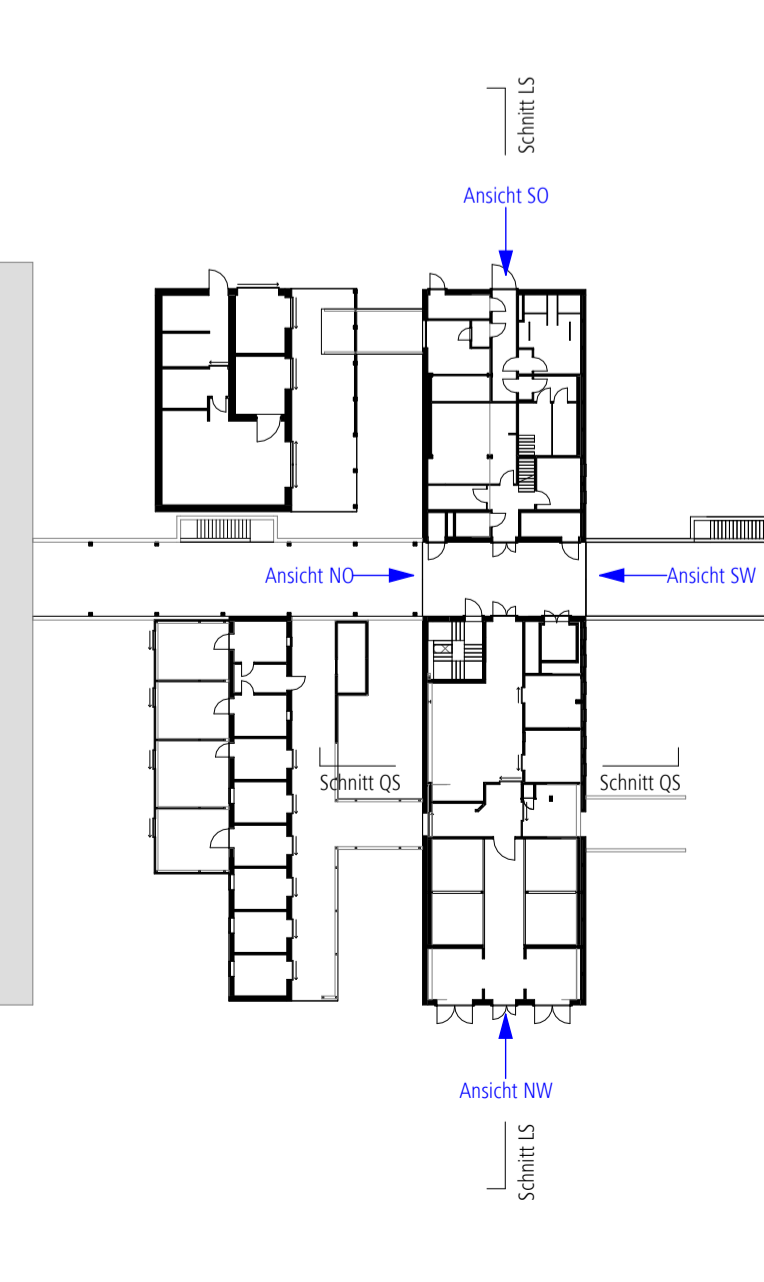
Fassade Südwest

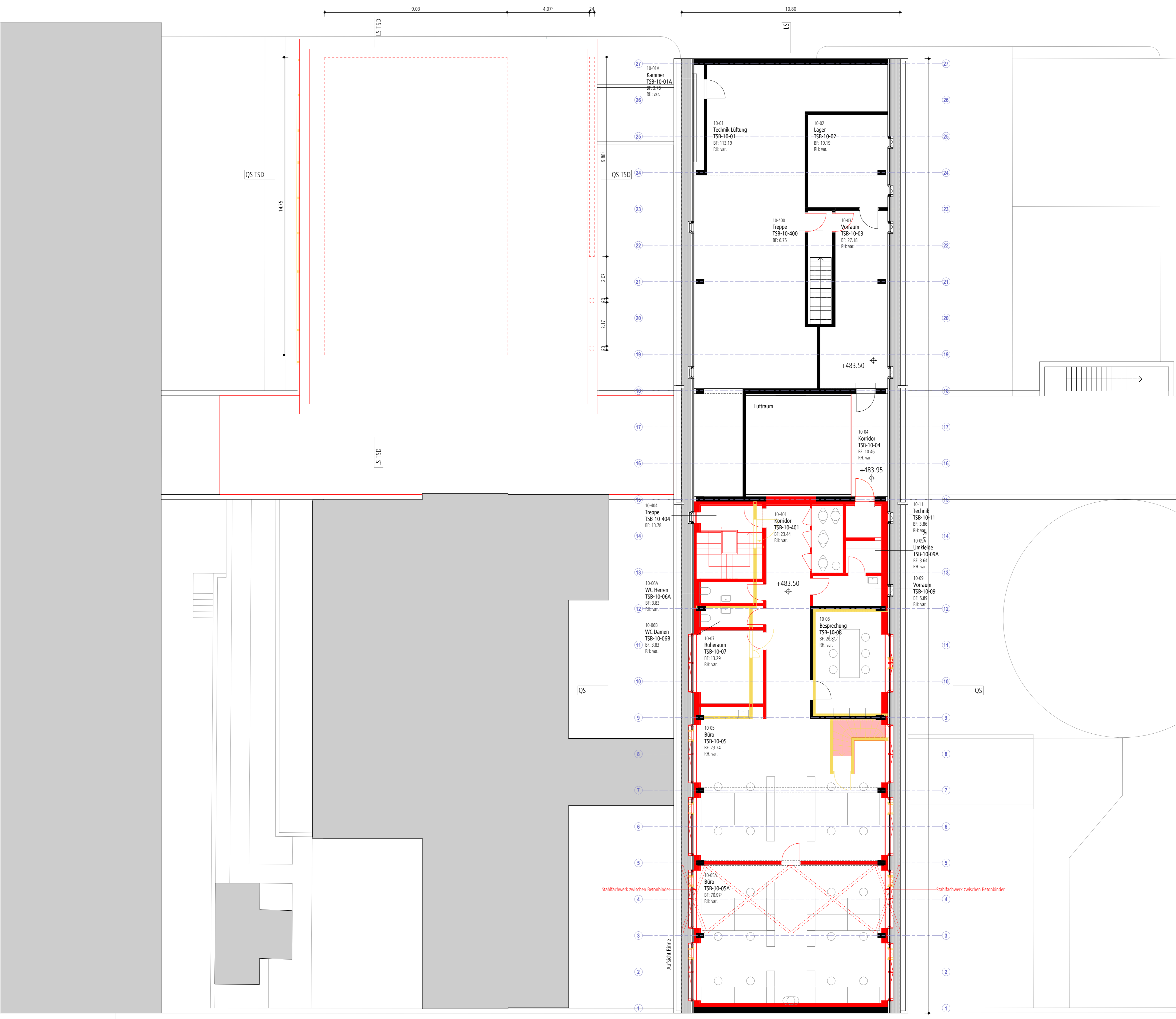


Fassade Südost



Schnitt LS





Bestehend
 Neu
 Abbruch

+ 0.00 = 480.07 m.o.M.
 0 2 4 5

Kanton Zürich
Baustrukturbüro
Hochbauamt

Bauobjekt
UZH TOP TKL TSA TSB TSC Stabilisierende Massnahmen
 Winterthurerstrasse 260, 8057 Zürich

Bauprojekt
Grundriss_10_TSB M 1 : 100

Dat.: 15.09.2023 Objekt-Nr.: 293 Bearbeiter: awa Grösse: A1
 Projekt-Nr.: 306030 Visum: Plan-Nr.: 293_232

Rev.: Rev.: Rev.: Rev.:
 Seifert Architekten AG info@use-arch.net Bezeichnung PFE
 Zweierstrasse 106, 8003 Zürich Tel. 043 990 77 20

